



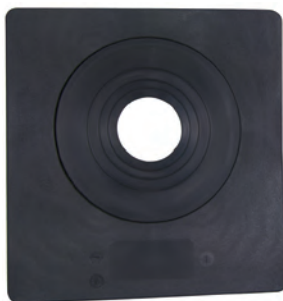
Electrical Mast Roof Flashing



- Flexible EPDM Rubber Base with Flexible Soft Aluminum Strip designed to seal to most panel configurations and roof pitches regardless of pipe location
- Resists Ozone and UV Light
- One Piece Construction for Fast Installation
- -67°F to +212°F
- IAMPO Cert. No. 3121 Approved for use with Type B Vents
- For use for Shingle Roof Applications
- Not for hot mopped or built up roofs
- Cannot use Petroleum based products or paint on flashing collar or plastic

| CAT. NO. | OUTSIDE DIAMETER OF PIPE TO BE FLASHED | BASE | | CASE QTY | WT/ CASE |
|----------|--|--------|-------|----------|----------|
| | | LENGTH | WIDTH | | |
| G14090 | 1/4" TO 5-3/8" | 15" | 15" | 4 | 2 |

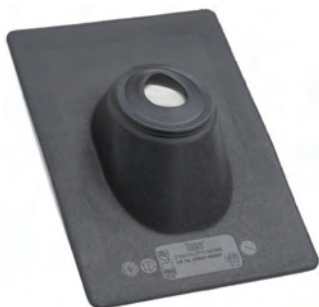
SIDEFLASH Thermoplastic Self-Seal Wall Flashings



- Designed to seal around piping penetrations through outside walls
- Slips easily over vent pipe - self-sealing to vent pipe surface
- Self-sealing elastomeric collar attached to a durable flexible hard plastic base
- Collar will not crack, chip, peel or separate from base
- Eliminates caulking - prevents moisture intrusion - no sealing compound required
- Absolutely leak-proof & fits most wall constructions
- Seals against air penetration - reduces energy costs
- Prevents bug or vermin intrusion
- Accommodates all vent types - ie: plastic, copper, steel or cast iron

| CAT. NO. | OUTSIDE DIAMETER OF PIPE TO BE FLASHED | BASE | | CASE QTY | WT/ CASE |
|----------|--|--------|-------|----------|----------|
| | | LENGTH | WIDTH | | |
| G12805 | 1/2" TO 2-1/2" | 8" | 8.5" | 12 | 4 |
| G12806 | 3" TO 6" | 12" | 12.5" | 12 | 7 |

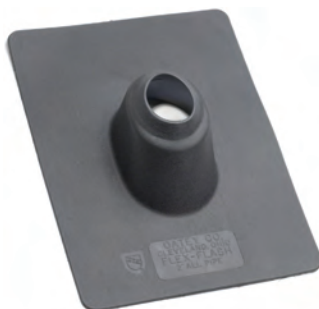
Thermoplastic Base Self Seal Roof Flashings



- Self-sealing elastomeric collar attached to a sturdy rigid thermoplastic base
- No caulking needed
- Absolutely leak proof
- Slips easily over pipe vent
- Self-sealing to vent pipe surface
- Self-adjusting to roof pitches up to 45°
- Base will not crack or warp
- Accommodates all vent pipe types - ie: plastic, copper, steel, cast iron
- Use in Shingled Roof Applications
- Not for hot mopped or built up roofs

| CAT. NO. | OLD CAT. NO. | OUTSIDE DIAMETER OF PIPE TO BE FLASHED | BASE | | CASE QTY | WT/ CASE |
|----------|--------------|--|---------|---------|----------|----------|
| | | | LENGTH | WIDTH | | |
| G11908 | G14101 | 1-1/4" TO 1-1/2" | 12-7/8" | 9-1/4" | 12 | 6 |
| G11909 | G14102 | 2" TO 2-1/2" | 12-7/8" | 9-1/4" | 12 | 6 |
| G11910 | G14103 | 3" | 15" | 11-1/4" | 12 | 8 |
| G11911 | G14104 | 4" | 16" | 12" | 12 | 9 |

Rubber Flexible Roof Flashings



- Roof Flashing slides over vent pipe - accommodates pitch up to 40°
- Commercial or Residential Applications
- Rubber sealing collar seizes the vent pipe with a locking grip preventing leakage
- Accommodates all vent types - ie: plastic, copper, steel or cast iron
- One piece construction molded from military grade elastomer assures long life & all weather protection - will not crack, chip or peel; oil, ozone & UV resistant
- Flexible base conforms to wide range of roof pitches, contours & surfaces
- For use in Shingled Roof or Clay Tile Applications
- Not for use in hot mopped or built up roofs

| CAT. NO. | OLD CAT. NO. | OUTSIDE DIAMETER OF PIPE TO BE FLASHED | BASE | | CASE QTY | WT/ CASE |
|----------|--------------|--|---------|---------|----------|----------|
| | | | LENGTH | WIDTH | | |
| G14009 | G30101 | 1-1/4" TO 1-1/2" | 11-1/4" | 8-7/8" | 12 | 6 |
| G14012 | G30102 | 2" | 11-1/4" | 8-7/8" | 12 | 7 |
| G14025 | | 2-1/2" | 11-1/4" | 8-7/8" | 12 | 8 |
| G14038 | G30103 | 3" | 13-1/4" | 9-7/8" | 12 | 9 |
| G14041 | G30104 | 4" | 14" | 11-1/2" | 12 | 13 |